

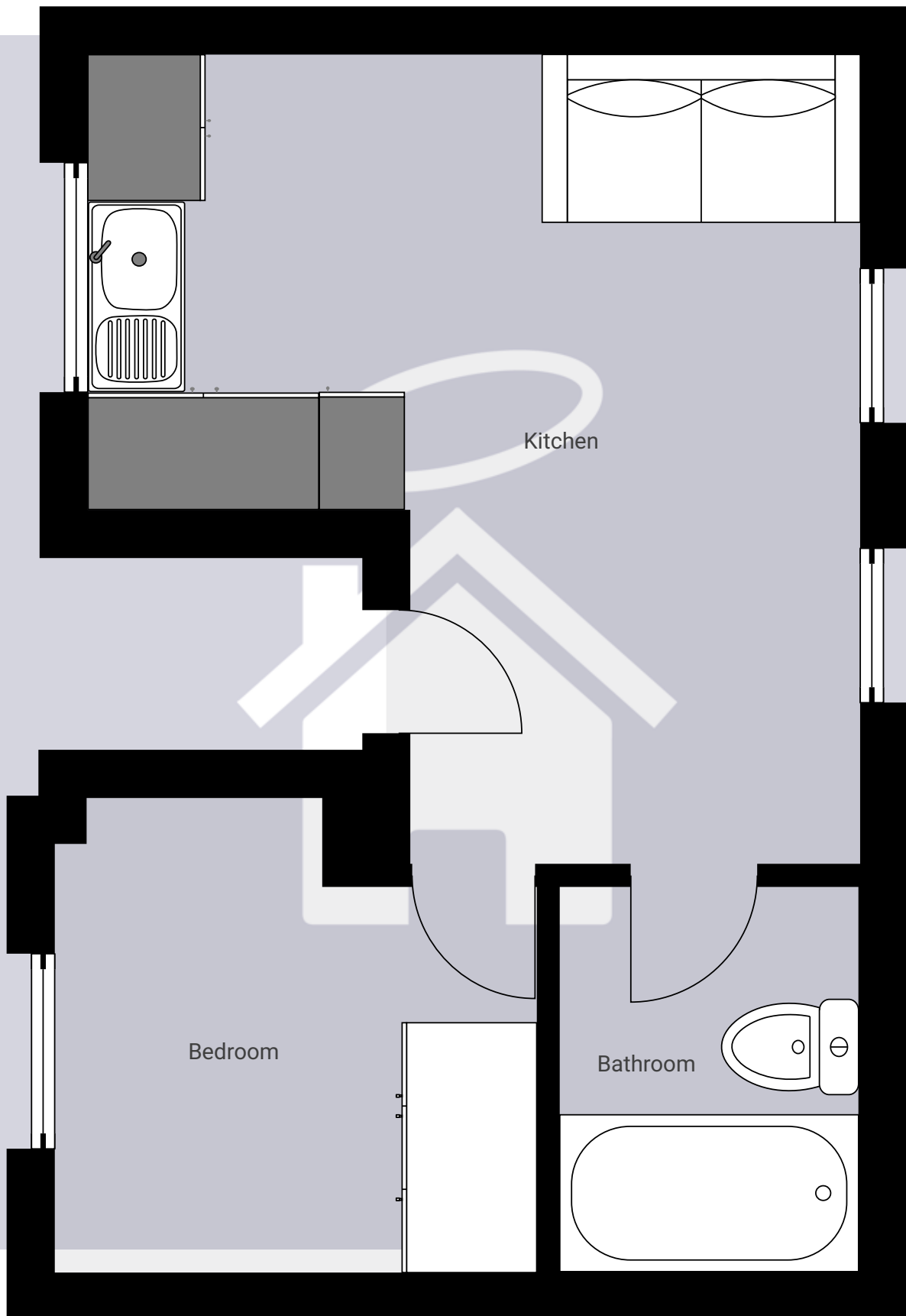
# Flat 5, 52, Bryngwyn Road

TOTAL AREA: 241.25 sq ft • LIVING AREA: 241.25 sq ft • FLOORS: 1 • ROOMS: 3



## ▼ 1st Floor

TOTAL AREA: 241.25 sq ft • LIVING AREA: 241.25 sq ft • ROOMS: 3



THIS FLOORPLAN IS PROVIDED WITHOUT WARRANTY OF ANY KIND. SENSOPIA DISCLAIMS ANY WARRANTY INCLUDING, WITHOUT LIMITATION, SATISFACTORY QUALITY OR ACCURACY OF DIMENSIONS.

Page 1/1